



The Armthorpe School

A Specialist School in The Arts and Sport



Our Ref: GBr/DMc

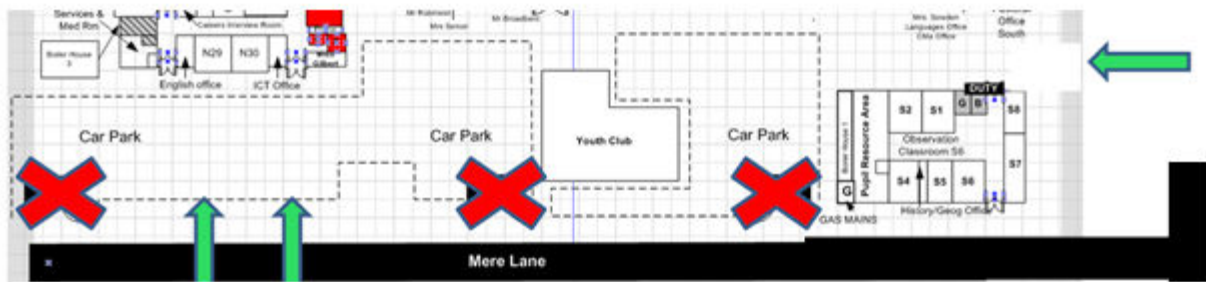
23 February 2010

Dear Parents/Carers

Student entry/exit routes

From Monday 1 March 2010 there will be changes to the designated pedestrian entry/exit routes onto and away from the school site.

No pedestrians will be permitted to use vehicular access routes as a means of walking onto the school site. The map below indicates the prohibited (see crosses) and accepted pedestrian routes (see arrows).



I write to seek your support in ensuring that this change is successful. The decision was made to implement the segregation of pedestrian and vehicles to help ensure your child's safety. In addition, senior staff have been on duty both before and after school and as from Monday 1 March a larger staff duty team will be present to ensure safe entry and exit from the school site.

From Monday 1 March 2010 **no vehicles** will be permitted onto the school site at the beginning and end of the school day. If however you have an appointment in school then please access the car park directly in front of the Administration Block. Any parent/carer who has permission to bring students onto site due to physical difficulties can continue with this arrangement.

If you drop your child off at school please do so near the pedestrian access routes as indicated on the map.

I thank you in advance for your support with this matter.

Yours sincerely

Graham Broadbent
Deputy Headteacher

Headteacher: Andy Cope BA MEd

Mere Lane, Armthorpe, Doncaster,
South Yorkshire, DN3 2DA
Tel: 01302 831582 Fax: 01302 300757
Email: admin@armthorpe.doncaster.sch.uk
www.armthorpeschool.org.uk

